

# How to find us

## Access to HIMA France in Champs-sur-Marne

### Arrival by car from Reims

Take the motorway A4 towards Paris, then take the exit N°10 Champs-sur-Marne/Cité Descartes. Take the first exit at the two roundabouts then enter in the park de la Haute Maison.

### Arrival by car from Paris

Take the motorway A4 towards Paris, then take the exit N°10 Champs-sur-Marne/Cité Descartes. Take the third exit at the roundabout then take the first exit at the two other roundabout and enter in the park de la Haute Maison.


### Arrival by train (RER A) from Paris or Chessy Marne-la-Vallée

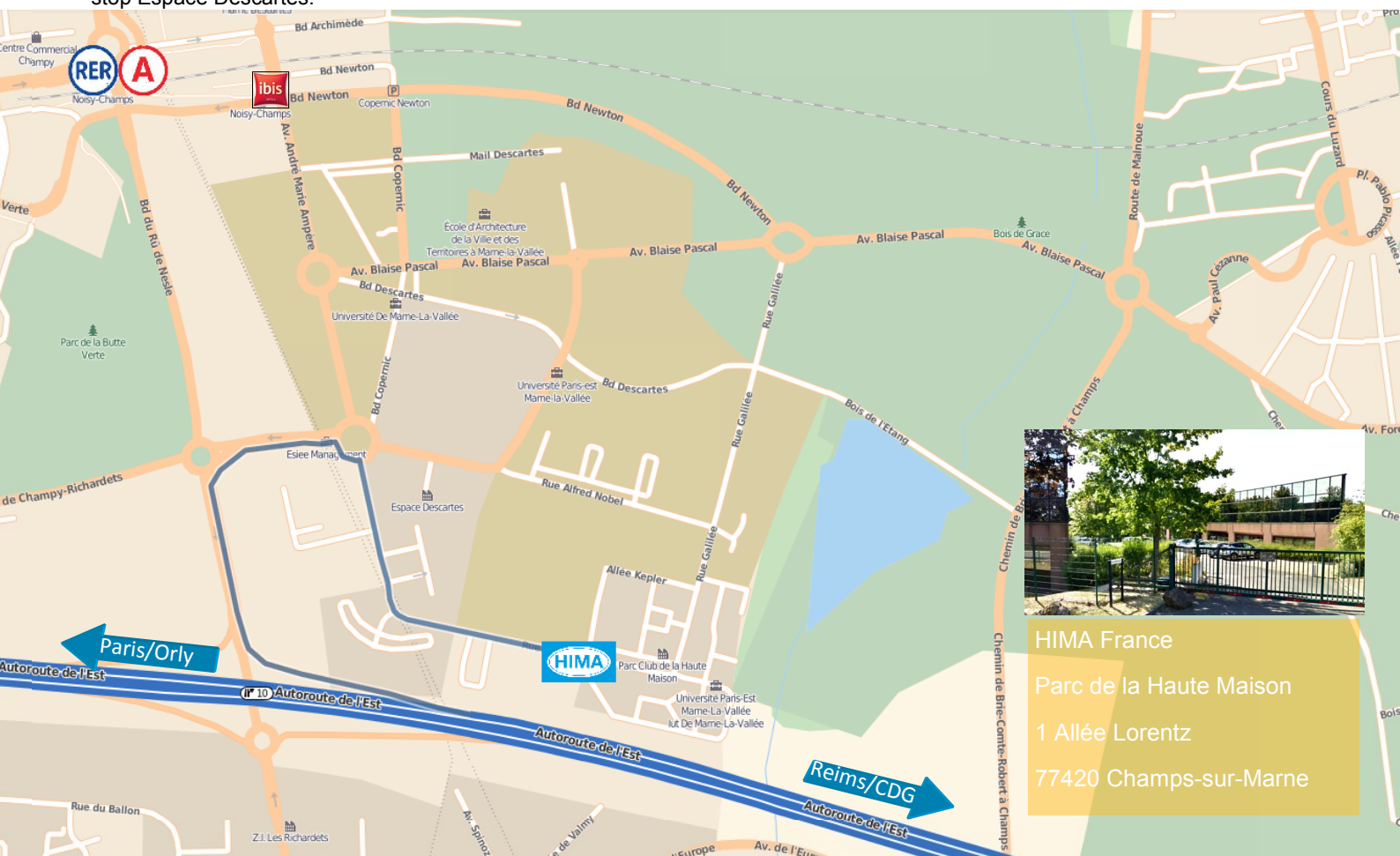
Descend at the station Noisy-Champs, take the exit Cité-Descartes. Then take the bus 312 direction Noisy Le Grand, and descend at the second bus stop Espace Descartes.

### Arrival by plan

Arrive at Orly airport or Charles de Gaulles airport, take a taxi to HIMA France or the train (RER B) until Châtelet-les-Halles, then another train (RER A) direction Marne-la-Vallée and get off at Noisy-Champs and take the exit Cité-Descartes. Then take the bus 312 direction Noisy Le Grand, and get off at the second bus stop Espace Descartes.

### Hotels near by

- IBIS Champs-sur-Marne (1.3 km – 4 minutes by car or 19 minutes' walk) 
- Novotel Marne-la-Vallée Noisy-le-Grand (4 km – 11 minutes by the car or 40 minutes by public transport)
- Relais Spa Chessy Val d'Europe (20 km – 20 minutes by car or 40 minutes by public transport)
- Explorers at Disneyland® Paris (25 km – 20 minutes by car or 55 minutes by public transport)
- Best Western Saint Louis Vincennes (15 km – 45 by car or 45 minutes by public transport)



HIMA France  
Parc de la Haute Maison  
1 Allée Lorentz  
77420 Champs-sur-Marne